

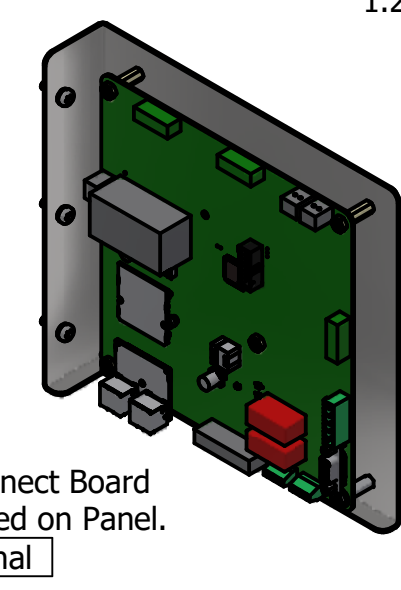
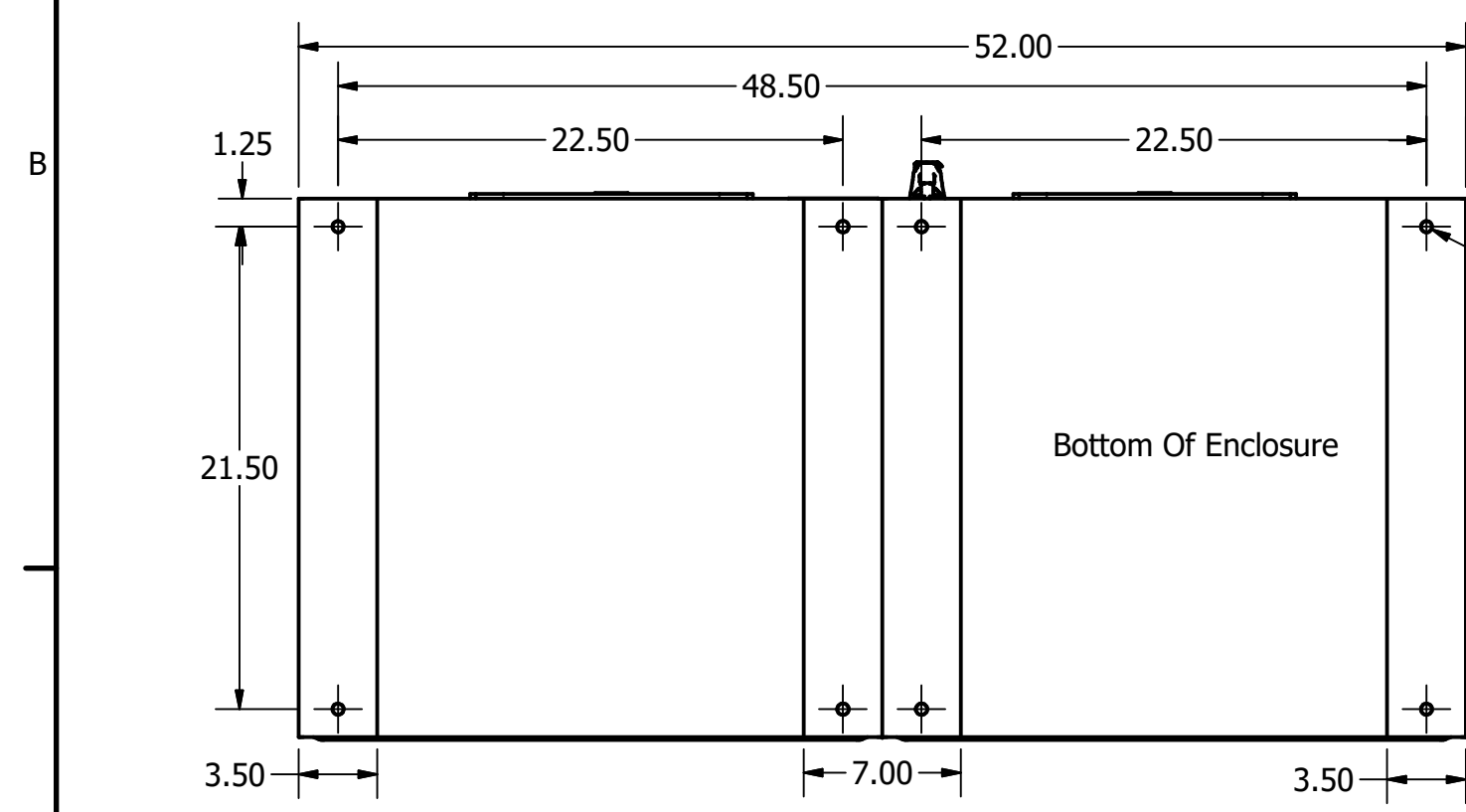
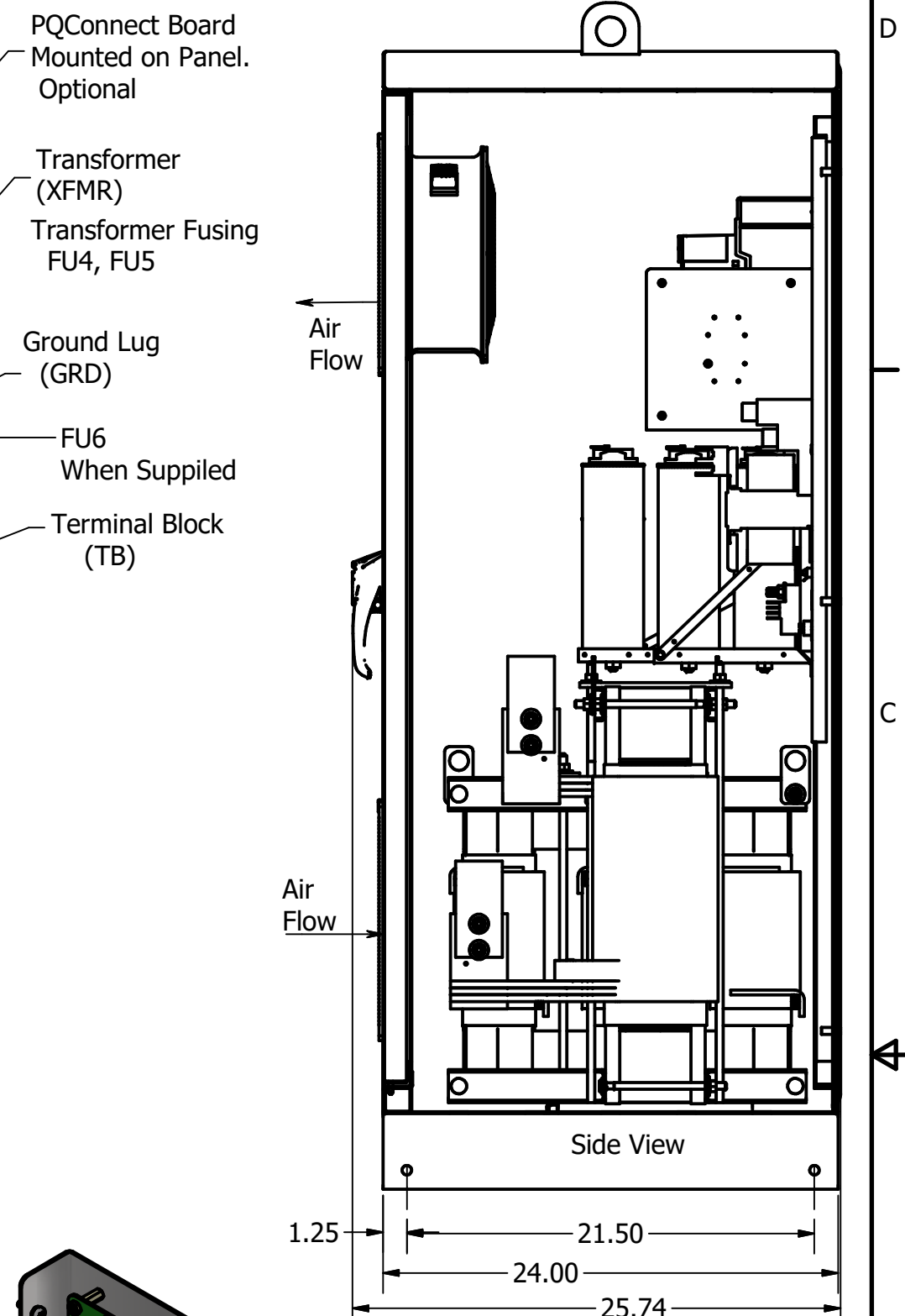
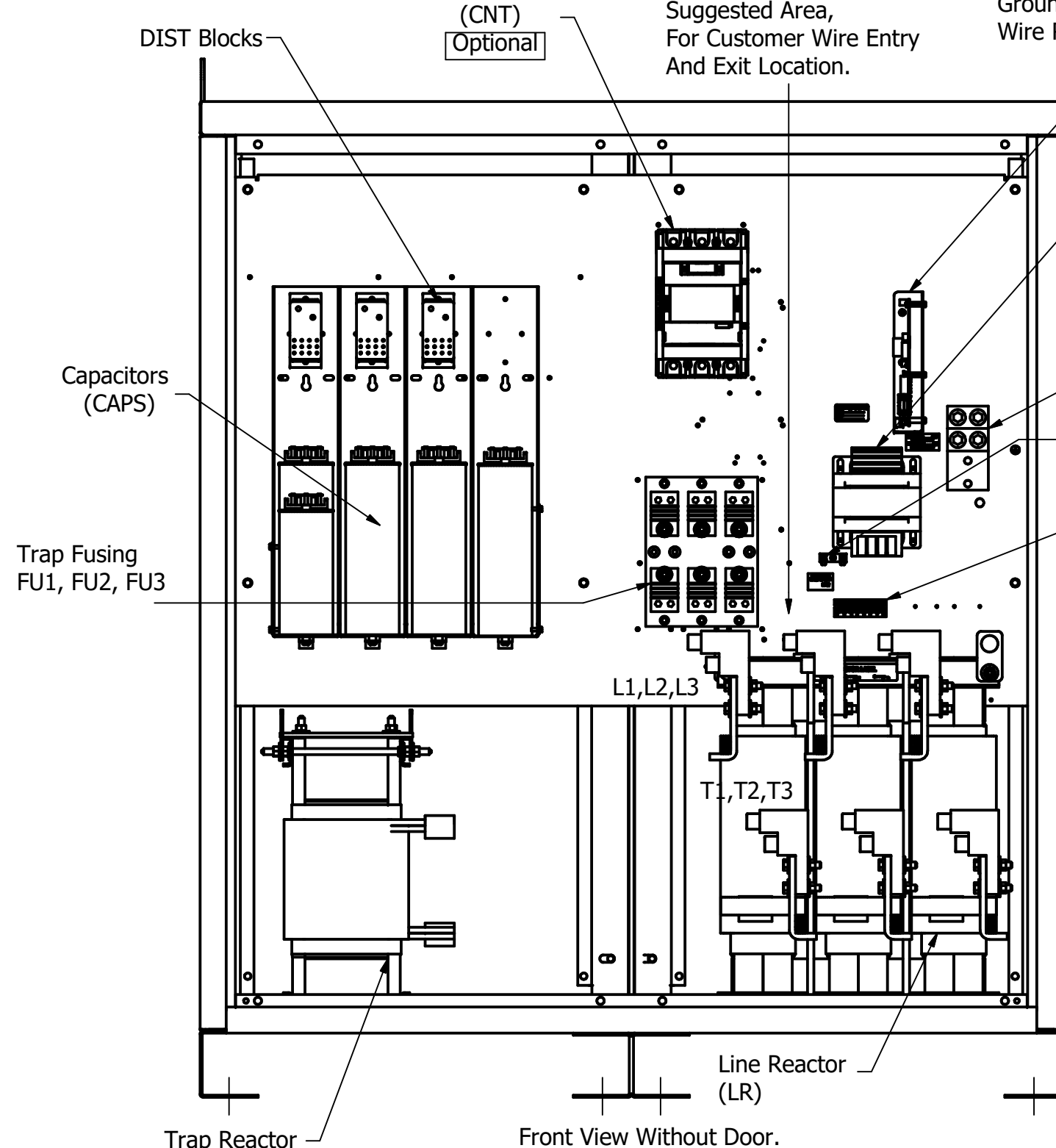
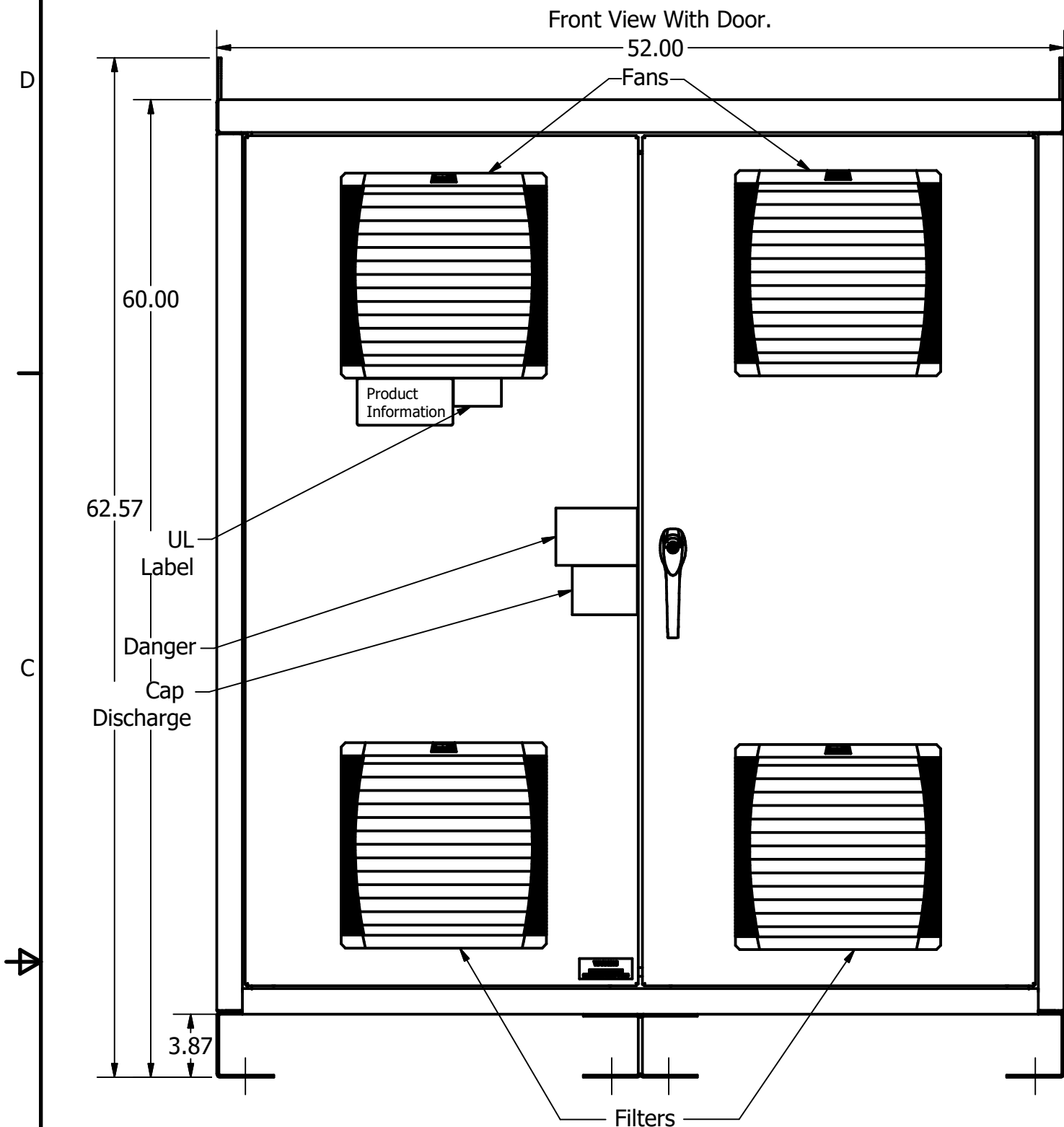
HGP Enclosed Type 1, Part Number	Schematic Drawing #	Approx Weight (LBS)	Shop Drawing #
HGP0700AW1S000#	28697-5S	1486	105498-T1
HGP0700AW1C000#	28697-5	1500	105498-T2
HGP0700AW1C*00#	29597-PQ	1502	105498-T13

*** = Communication Option**
= Mechanical Option

HGP Part Number	HorsePower (HP)	kVar	Maximum Amps (A)	Harmonic	Voltage (V)	Hz.	Phase
HGP0700AW1---	700	210	840	5th	480	60	3

Customer Connections:
 L1, L2, L3, T1, T2, T3, and
 Ground Lug.
 Wire Range- Four, 600MCM-2AWG

Note: For Torque Information
 See IOM Manual.



Thermal Switch, Terminal Block (Optional) Located on Inductors

Wire Range: 18 AWG To 4 AWG.
 Torque: 20 LB-IN (2.3 Nm)

Switch Opens on Temperature Rise
 Contact Rating: 6A @ 120 VAC, Resistive
 Contact Rating: 5A @ 120 VAC, Inductive

HGP0700AW-----			
Components	1S000#	1C000#	1C*00#
Line Reactor (LR)	X	X	X
Trap Reactor (TR)	X	X	X
Capacitor (Cap)	X	X	X
Trap Fusing, FU1, FU2, FU3	X	X	X
Contactor (CNT)		X	X
Transformer (XFMR)	X	X	X
XFMR Fusing, FU4, FU5	X	X	X
PQConnect Board			X

*** = Communication Option**
1 = PQconnect w/Modbus RTU over RS485
2 = PQconnect w/Ethernet IP

= Mechanical Option
0 = No Option
H = Heater (Only in Type 3R)
V = Vibration Pads
T = Thermal Switches

Customer Is Responsible For Installation to
 Meet All National And Local Electrical Codes.

Material(s) Shall be RoHS Compliant

THE INFORMATION AND DESIGNS CONTAINED IN THIS DRAWING ARE CONFIDENTIAL AND THE PROPRIETARY PROPERTY OF ALLIED MOTION TECHNOLOGIES INC. AND ITS SUBSIDIARIES. NEITHER THIS DESIGN NOR ANY INFORMATION CONTAINED IN THIS DRAWING MAY BE REPRODUCED OR DISCLOSED TO OTHERS WITHOUT THE EXPRESS WRITTEN CONSENT OF ALLIED MOTION TECHNOLOGIES INC. AND ITS SUBSIDIARIES.

NO	REVISION	DATE	BY	TOLERANCES (EXCEPT AS NOTED)
I	6691 Update Reactor Orientation	06/04/24	JRN	DECIMAL
H	6495, KTR210A65(HGP) to (HG)	11/20/2023	DSW	.XX ± .25 .XXX ± .10
G	6024, PQ/Mech Options Added	8/1/2023	DSW	FRACTIONAL ± 1/16
F	5628 GE to ABB CNT CHG.	12/8/2021	DSW	ANGULAR ± 1°
E	5755, LR and PT Terminals updated	10/25/2021	DSW	

TCL W132N10611 Grant Drive
 Germantown, WI 53022
 © 2023 TCL, LLC

An Allied Motion Company

HarmonicGuard Passive, HGP0700AW1----
 HGP, 700HP, 480/3/60, Type 1

DRN BY DSW DATE 4/30/15 105498DG
 SCALE 1/8 APRVD: SIZE C SHT 1 OF 1